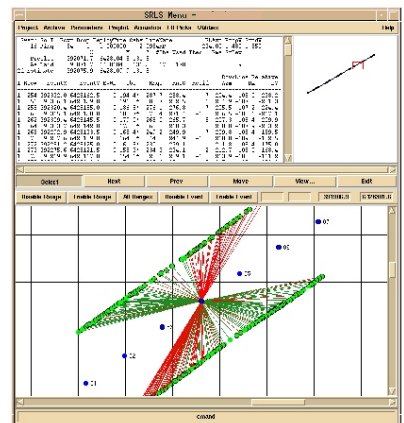
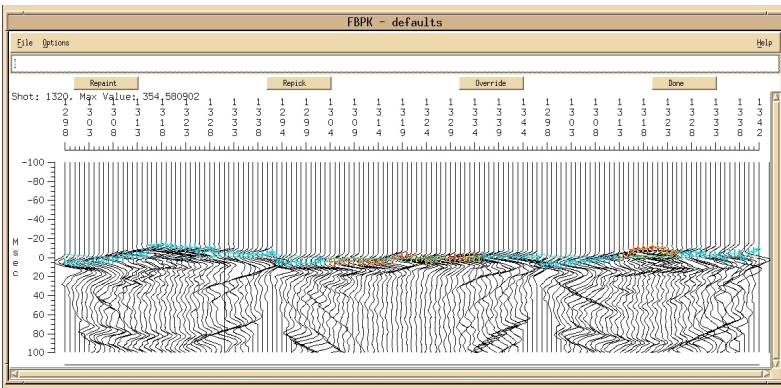
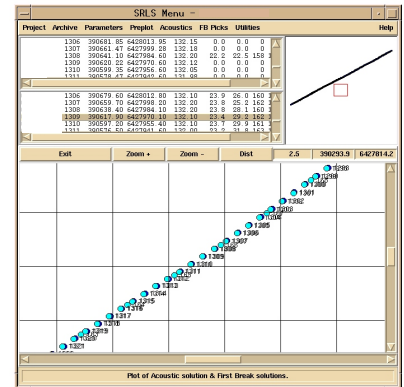
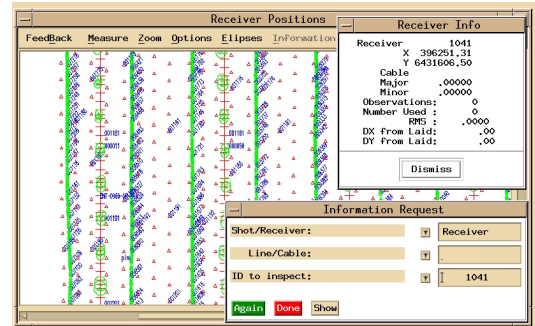


RTSRLStm

Ocean Bottom Cable and Transition Zone Real-Time Receiver Location System

- * Swath, patch or roll-along operations fully supported.
- * Automatic first break picking from seismic instruments or from SEG-Y or SEG-D.
- * Real-time support for inputs from contractor INS systems.
- * Real-time support for various acoustic manufacturers and systems.
- * Seismic receiver positioning using any combination of first break picks and acoustics.
- * Real-time quality control displays to include:

- * Real-time picking.
- * Map view for solution / attribute analysis.
- * Post line acquisition analysis and processing functions:
 - * EDITRCVR solution analysis tool.
 - * Map view for positional comparisons.
 - * Time series / "waterfall" for data analysis.
 - * Scatter plots.
 - * Population histograms.
- * Optional full post processing package - S.R.L.S..
- * Optional real-time and offline binning support.
- * Output in UKOOA-P1/90 and, or SPS formats.
- * Special outputs supported for contractor's INS and processing.



Applications include:

- * Ocean bottom cable operations.
- * Digital seismic telemetry buoy operations.
- * Independent quality assurance testing.
- * Can be fielded on low cost Pentiumtm based hardware.

At EnSoCo, we have a history of solving problems, not just finding them.

EnSoco has been providing on-board quality control, final product and qualified field personnel since 1995. We are once again setting the standard for position processing.



EnSoCo, Inc.

SPATIALLY AWARE

2323 S. Voss, Ste. 490
Houston, Tx. 77057
Tel: (713) 278-2326
Fax: (713) 278-2328
Email: sales@ensoco.com
Home Page: http://www.ensoco.com